

**CELL :- Tensioner** | **CELL NAME:-A157** | **MACHINE / STAGE :- Troub** | **OPERATION : Facing**

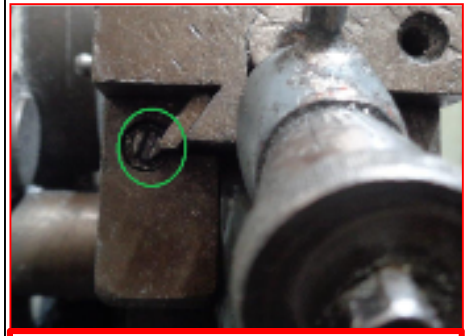
**KAIZEN THEME -To avoid** A157 Body Back facing line mark.

**IDEA :-** Screw to be Change.

**WIDELY/DEEPLY:-**

**COUNTERMEASURE:-** 1) Screw changed  
2)Screw kept spare 3)Check point added in Jh Check sheet

**PROBLEM / PRESENT STATUS -**A157 Body Back facing line mark.



Screw loose & worn out

Screw replaced

**BEFORE**

**AFTER**

<b>BENCHMARK</b>	21 No.
<b>TARGET</b>	0 No.
<b>KAIZEN START</b>	17.10.14
<b>KAIZEN FINISH</b>	18.10.14

**TEAM MEMBERS :-**  
Nana ugle ,vijay walunj,

- BENEFITS :-**
1. Prevent Re-occurrence of Customer Complaint.
  2. Reduce COPQ.

**KAIZEN SUSTENANCE**

**WHAT TO DO-** Check point added in fixture maintenance sheet .

**HOW TO DO:** Screw driver & Visual .

**FREQUENCY :** Once in month

COST INCURRED FOR MAKING KAIZEN		
<b>MATERIAL COST IN RS</b>	<b>LABOUR COST IN RS</b>	<b>TOTAL COST IN RS</b>
-----	-----	-----

**WHY - WHY ANALYSIS :-**

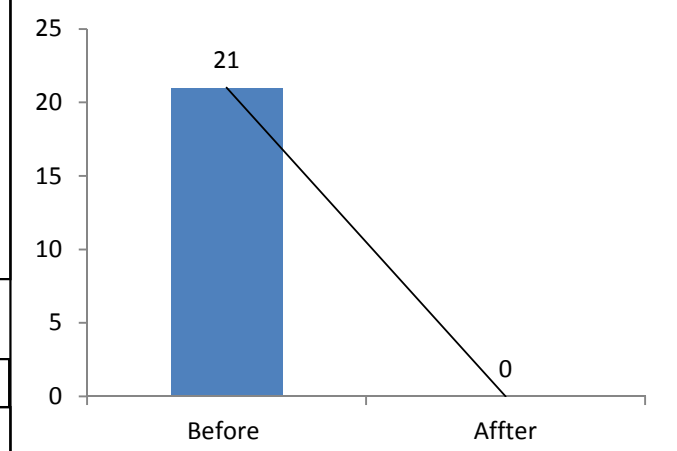
**Why 1** – A157 Body Back facing line mark.

**Why 2** – Play in slide .

**Why 3** – slide Tightening screw loose.

**Why 4** – Screw head worn out after long use.

**RESULT :-**



**ROOT CAUSE--** Screw head worn out after long use.

**REGISTRATION NO. & DATE:-** 17.10.2014

**REGISTERED BY :-** Ganesh Padwalkar

**MANAGER'S SIGN :-** Sunil kinkar

SCOPE & PLAN FOR HORIZONTAL DEPLOYMENT				
SR. NO.	CELL	TARGET	RESPONSIBILITY	STATUS
1	A319 ,A216	18.10.14	Nana Ugle	Completed